



40W Light Sensor LED Wall Pack Light



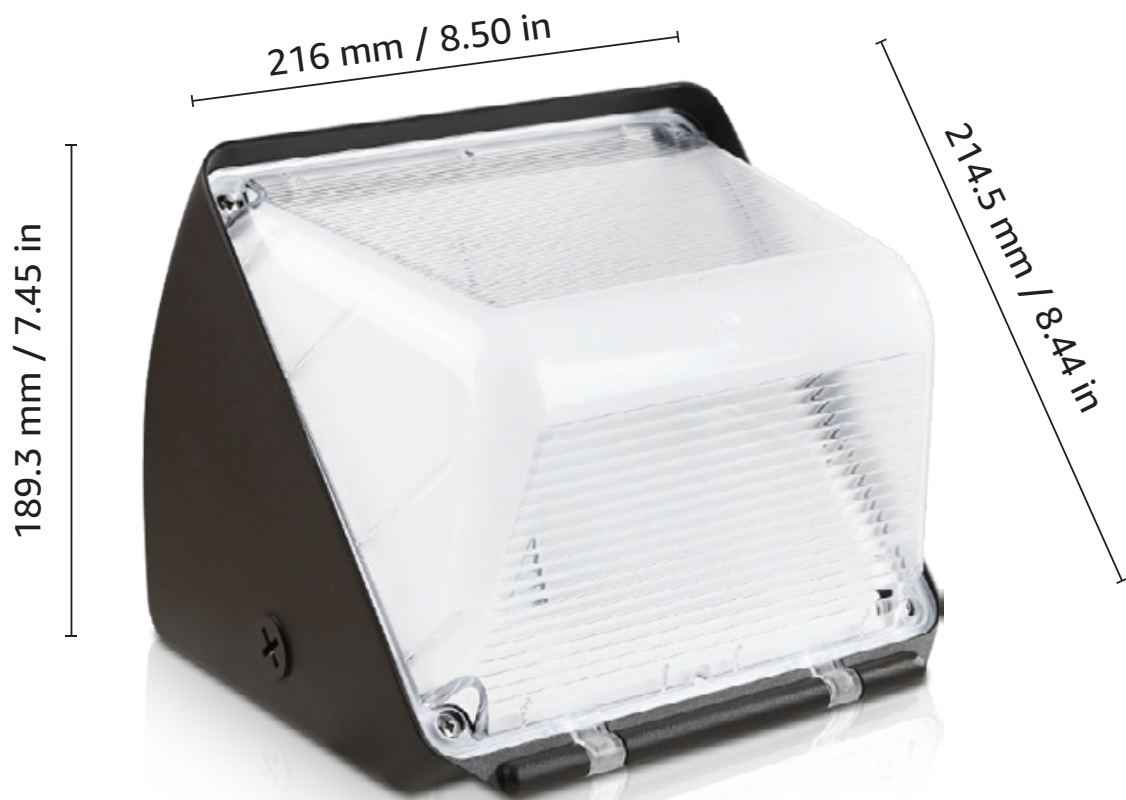
Product Features

- Light sensor included, Lamp turns on/off automatically due to light.
- 200 W Metal Halide Equivalent, Save 70% energy, Anti-surge protection.
- Input voltage: 120-277 V AC, Waterproof IP65, Flicker-free.
- Lumileds LED inside, 5 year warranty.
- UL certified.

Product Information

SKU	630001-NW-US	EAN Code	4894495032488
Color Consistency (SDCM)	<6	Power Consumption (W)	40
Brightness (lm)	5000	Metal Halide Equivalent (W)	200
Light Color	Daylight White	Color Temperature (K)	5000
Ambient Light Sensor	ON < 25 Lux; OFF > 100 Lux	CRI	80
Beam Angle (Degree)	110	Input Voltage (v)	120-277V AC
Frequency (hz)	50/60	Power Factor	>0.9
Lifespan (h)	50000	Length (in)	8.5
Width (in)	8.44	Height (in)	8.34
Net Weight (lb)	3.53	Material	Aluminum
Waterproof	Yes	Protection Rating	IP65
Safety Rating	UL	Package Quantity	Pack of 1 Unit
Warranty	5 Years		

Product Dimensions



Photometric Data

[Download IES](#)

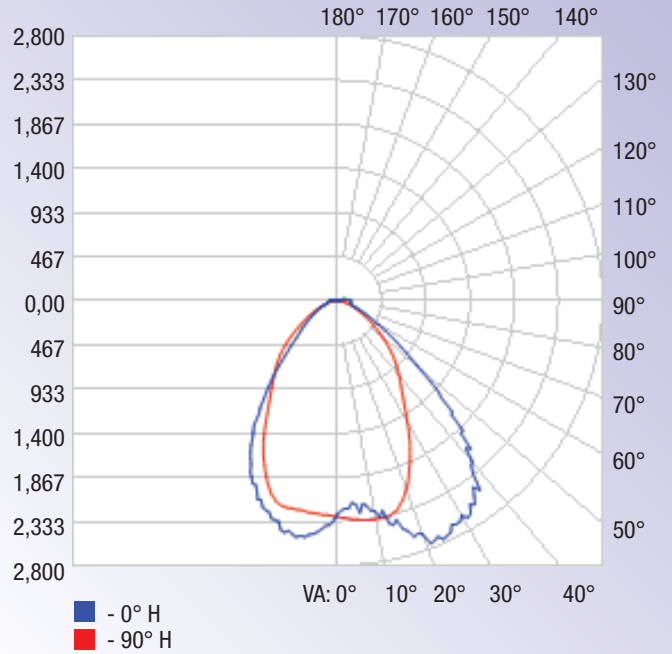
OUTDOOR PHOTOMETRIC REPORT

MANUFACTURER: Lepro
SKU NO.: 630001-NW-US
LAMP OUTPUT: 1 lamp, rated Lumens / lamp: 5178.1
MAX CANADELA: 2,758.8 AT HORIZONTAL: 24°, VERTICAL: 1°
LUMINOUS OPENING: Point
NEMA TYPE: 6 X 6

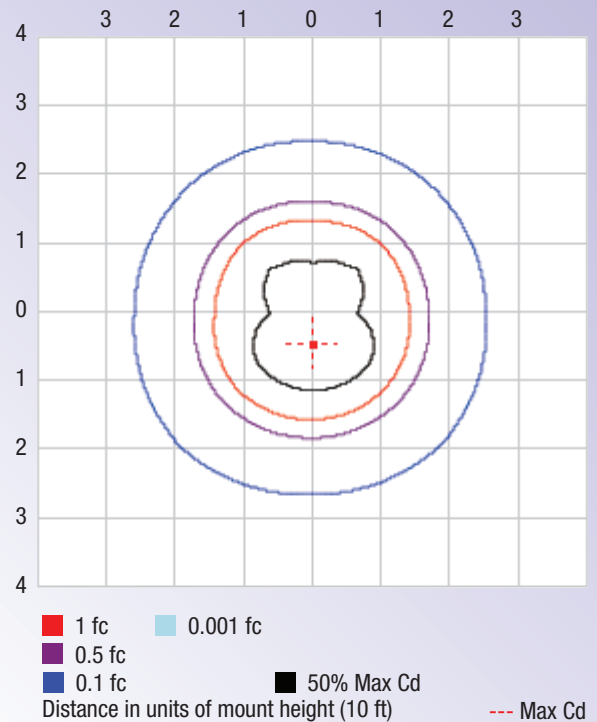
LUMENS PER ZONE

ZONE	LUMENS	% TOTAL
0-10	221.2	4.3%
10-20	673.5	13.0%
20-30	1,033.6	20.0%
30-40	1,110.0	21.4%
40-50	893.2	17.3%
50-60	533.8	10.3%
60-70	290.6	5.6%
70-80	155.2	3.0%
80-90	91.9	1.8%

Polar Candela Distribution



Isofootcandle Plot



ILLUMINANCE AT A DISTANCE

	CENTER BEAM FC	BEAM WIDTH	
2 ft	562.79 fc	2.9 ft	3.6 ft
4 ft	140.70 fc	5.9 ft	7.2 ft
6 ft	62.53 fc	8.8 ft	10.9 ft
8 ft	35.17 fc	11.7 ft	14.5 ft
10 ft	22.51 fc	14.7 ft	18.1 ft

■ Vert. Spread: 72.5° ■ Horiz. Spread: 84.4°

Other Models

SKU	Power (w)	Lumen (lm)	CCT	Voltage	Beam Angle	Life Hrs	CRI	Equivalent Power(w)	DLC	Website
630001-NW-US	40	5,000	5000K	120-277V	110°	50,000	80	200	std	Visit
630002-NW-US	80	10,000	5000K	120-277V	110°	50,000	80	300	std	Visit
630003-NW-US	120	15,000	5000K	120-277V	110°	50,000	80	400	std	Visit



630001-NW-US
40 W



630002-NW-US
80 W



630003-NW-US
120 W

